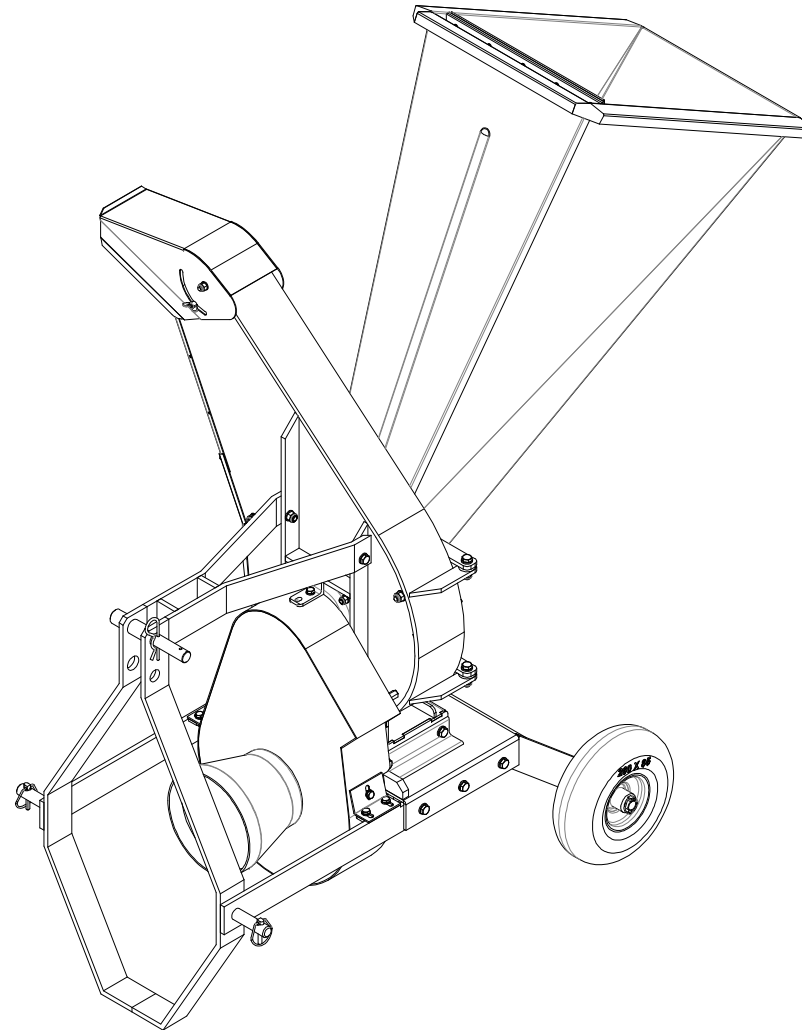


Bio 90 T

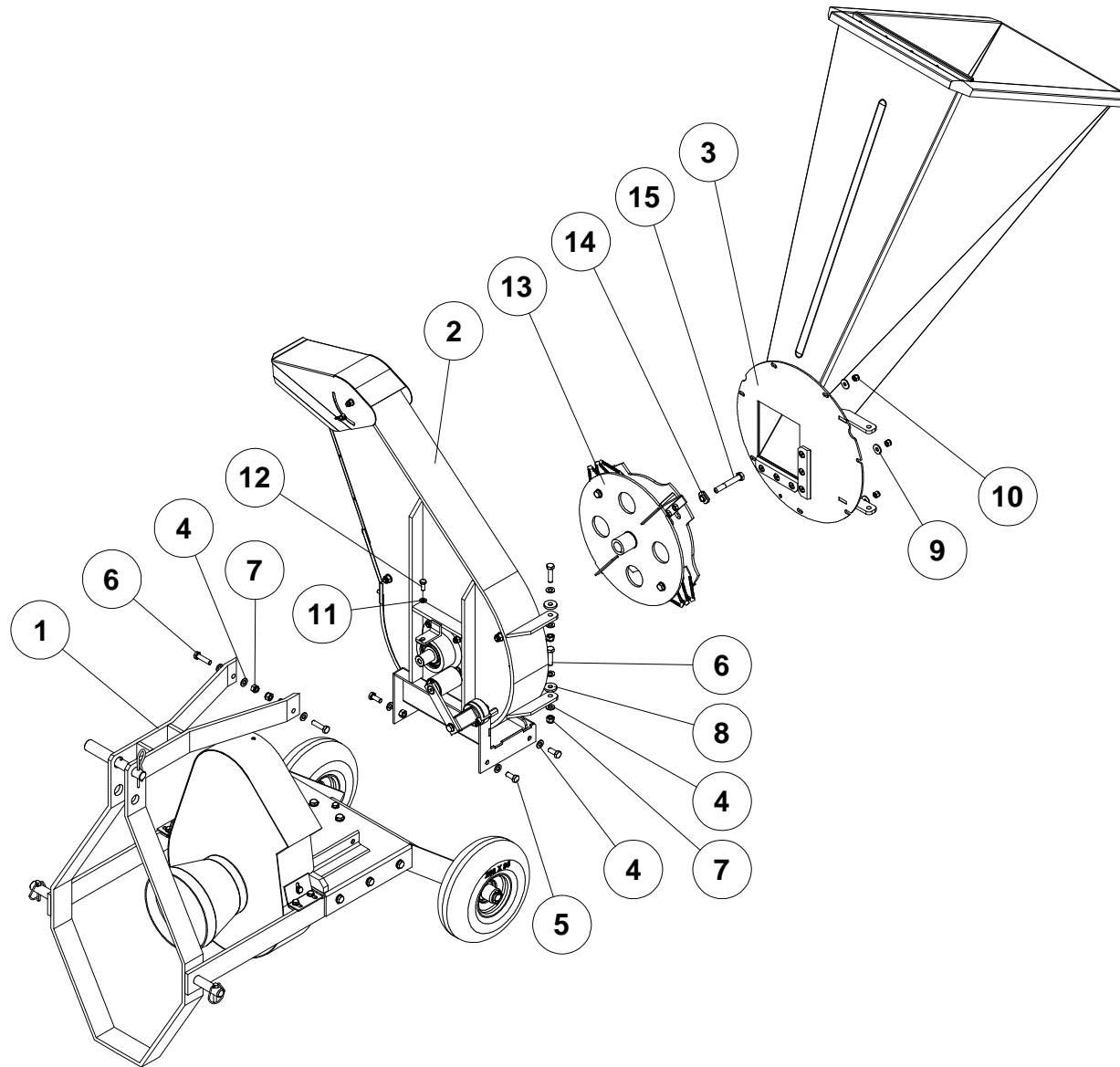
SPARE PARTS



Rev.1-2012

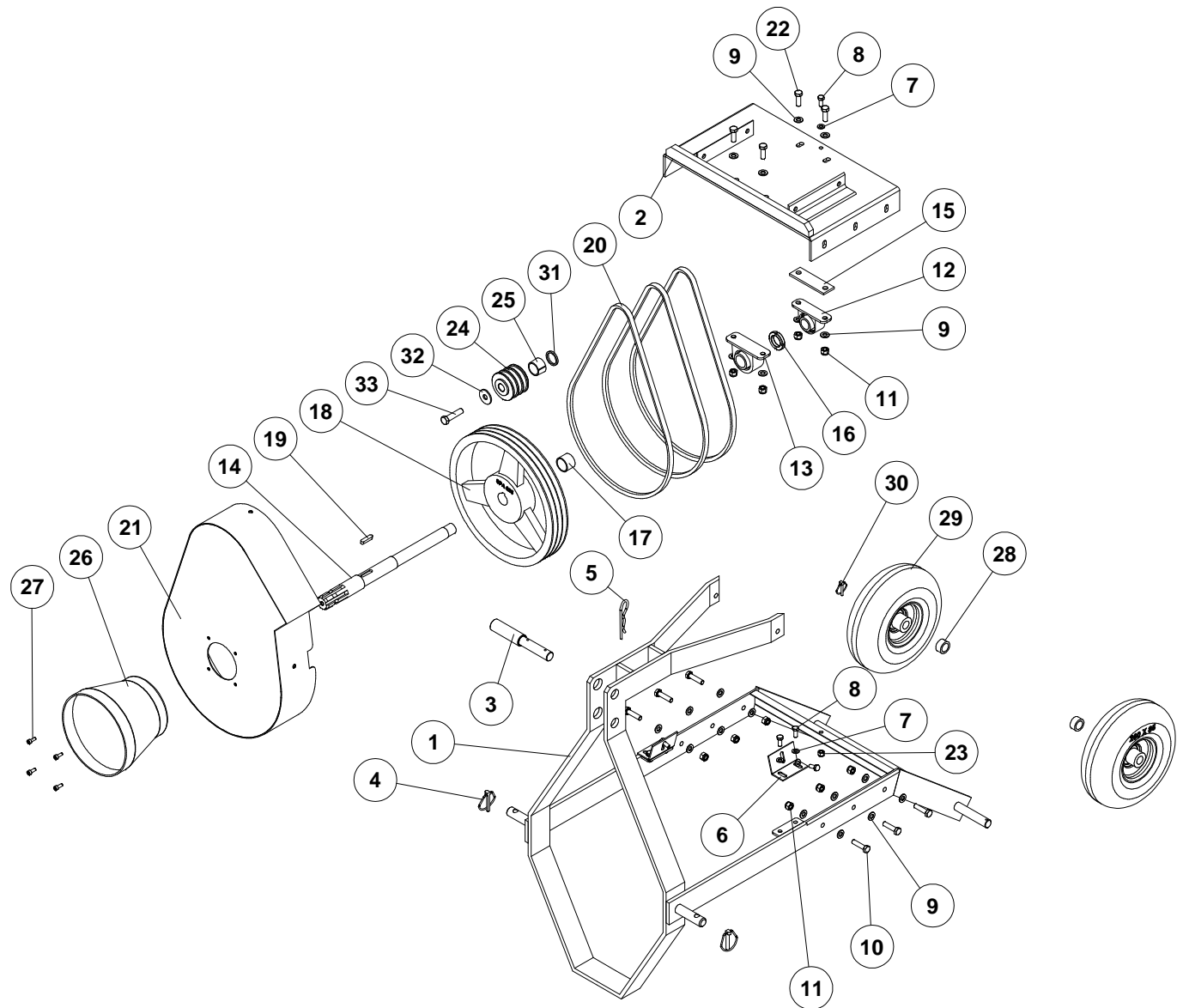
Bio 90 T**TAB. 1 – Basic machine**

Pos.	Description	No.	Code
1	PTO Frame Assembly	1	001078
2	PTO machine Assembly	1	001079
3	Hopper Assembly (left version)	1	001080
4	Washer \varnothing 10x20	12	900028
5	Screw TE M10x25	4	900380
6	Screw TE M10x40	4	900363
7	Self lock nut M10	4	900030
8	Washer \varnothing 30x10.5x5	2	000433
9	Washer \varnothing 8x24	7	900038
10	Self lock nut M8	7	900027
11	Washer \varnothing 8x16	1	900034
12	Screw TE M8x20	1	900378
13	Rotor Assembly (left version)	1	001081
14	Special washer	1	000023
15	Screw TE M12x80	1	900331



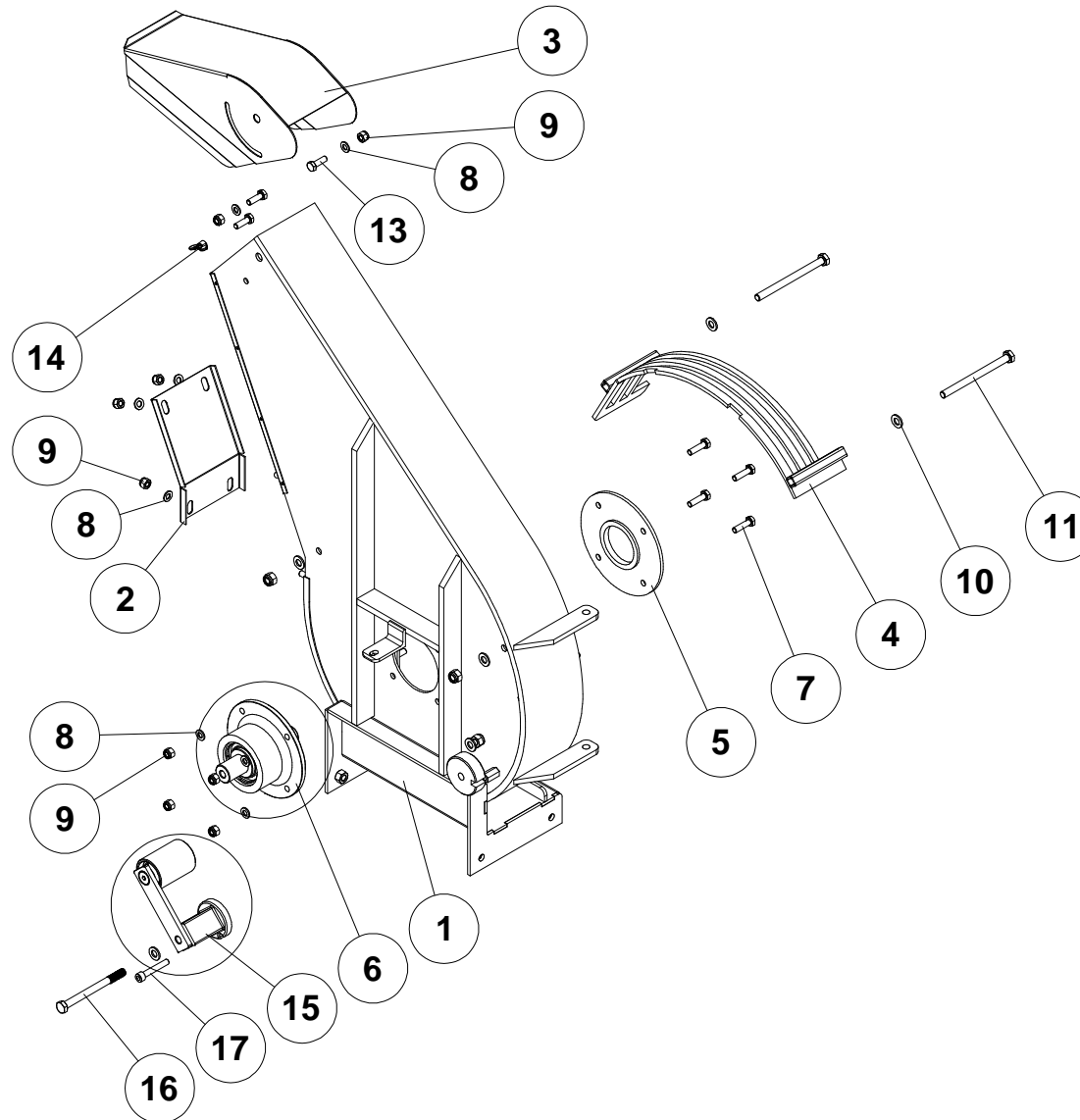
Bio 90 T**TAB. 2 – PTO Transmission**

Pos.	Description	No.	Code
1	PTO frame	1	001082
2	Bottom frame	1	001083
3	Pin	1	900300
4	Circlip pin $\varnothing 7$	2	900750
5	Elastic pin	1	900121
6	Cover clamp	2	001084
7	Washer $\varnothing 8 \times 16$	7	900034
8	Screw TE M8x20	7	900378
9	Washer $\varnothing 10 \times 20$	20	900028
10	Screw TE M10x40	6	900363
11	Self lock nut M10	10	900030
12	Bearing SBPP 205	1	540004000
13	Bearing SBPP 206	1	540005000
14	PTO shaft	1	025200000
15	Spacer	1	001085
16	Ring nut M 30x1.5	1	530008030
17	Spacer	1	001086
18	Pulley 3 SPA 325	1	900751
19	Key 8x7x35	1	900752
20	Belt SPA-38	3	900400
21	Cover	1	001087
22	Screw TE M10x30	4	900373
23	Self lock nut M8	1	900027
24	Pulley 3 SPA 63	1	900753
25	Bush	1	900754
26	PTO cover	1	520008003
27	Screw TCEI M6x16	4	900472
28	Spacer	2	001088
29	Wheel 260x85	2	900031
30	Circlip pin $\varnothing 4.5$	2	900333
31	Spacer	1	001089
32	Washer $\varnothing 12 \times 24$	1	900755
33	Screw TE M12x50	1	900361



Bio 90 T**TAB. 3 – PTO Machine**

Pos.	Description	No.	Code
1	Machine frame	1	001090
2	Screen inspection	1	000025
3	Cover	1	000027
4	Screen	1	001091
5	Counter flange	1	000395
6	Flange Assembly	1	000393
7	Screw TE M8x30	4	900368
8	Washer ø8x16	10	900034
9	Self lock nut M8	10	900027
10	Washer ø10x20	6	900028
11	Screw TE M10x130	2	900029
12	Self lock nut M10	3	900030
13	Screw TE M8x25	3	900333
14	Wing nut M6	1	900756
15	Idler Assembly	1	001092
16	Screw TE M10x120	1	900415
17	Screw TCEI M8x50	1	900490

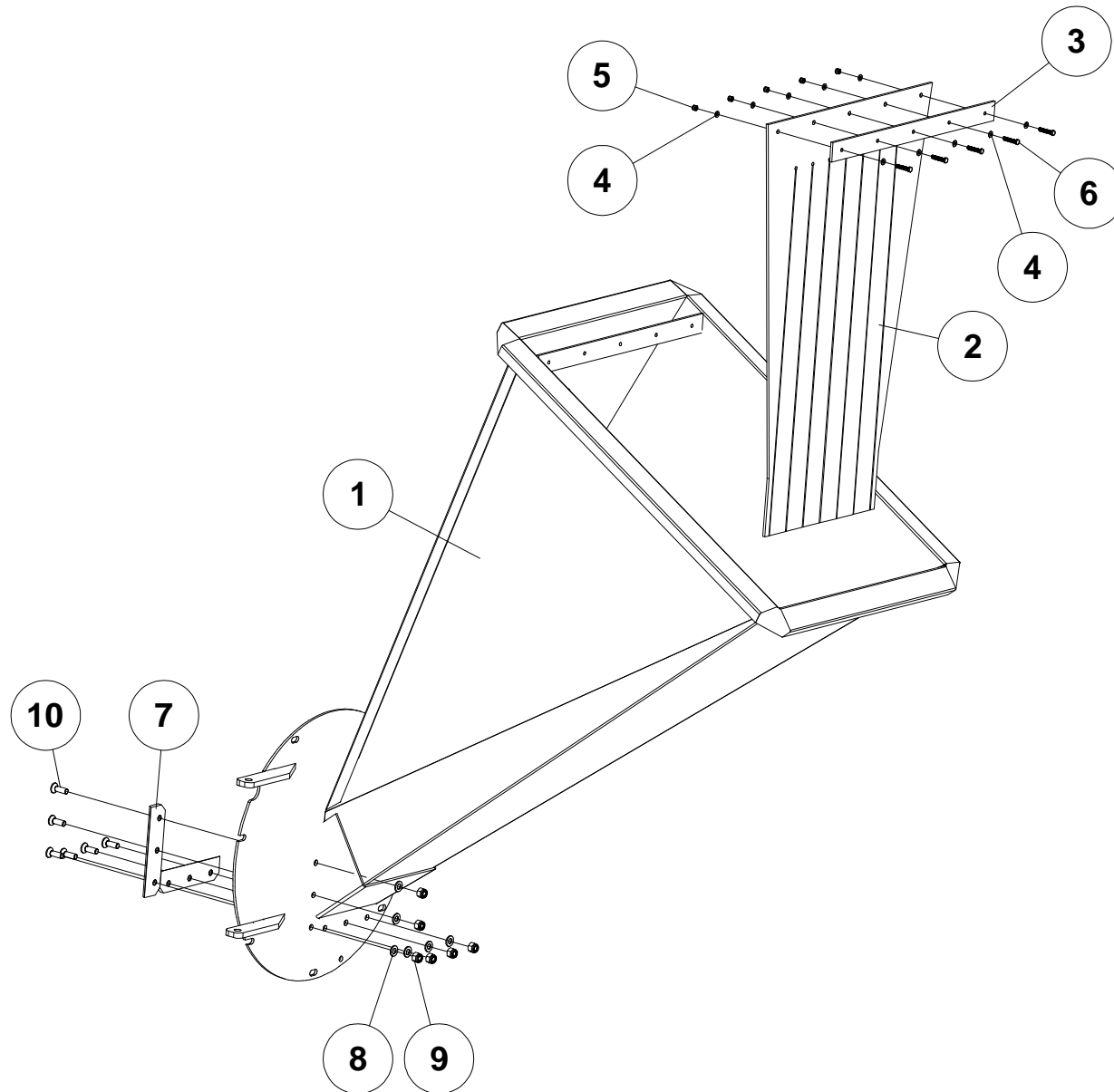


Bio 90 T

TAB. 4 – Hopper



Pos.	Description	No.	Code
1	Left hopper with hinge	1	001093
2	Rubber protection	1	000047
3	Plate	1	000046
4	Washer ø6x12	10	900046
5	Self lock nut M6	5	900041
6	Screw TE M6x25	5	900044
7	Counter blade	2	000045
8	Washer ø8x16	6	900038
9	Self lock nut M8	6	900027
10	Screw TE M8x25	6	900045

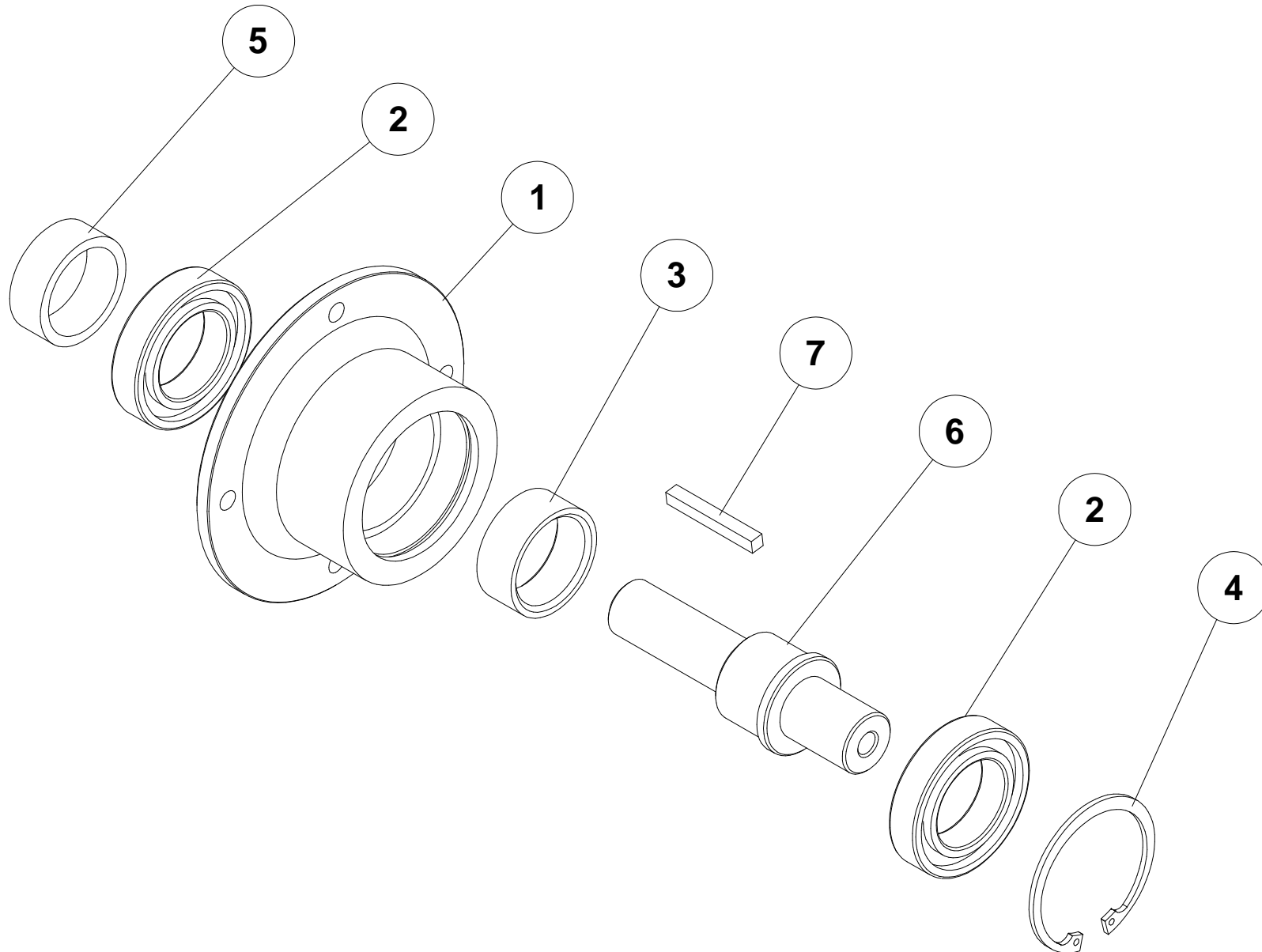


Bio 90 T

TAB. 5 – Flange Assembly



Pos.	Description	No.	Code
1	Flange	1	00401
2	Bearing 6008	2	900343
3	Spacer L=20	1	000399
4	Seeger ring ø68	1	900342
5	Spacer L=18	1	000398
6	Shaft	1	000394
7	Key 6.3x6.3x50	1	900340

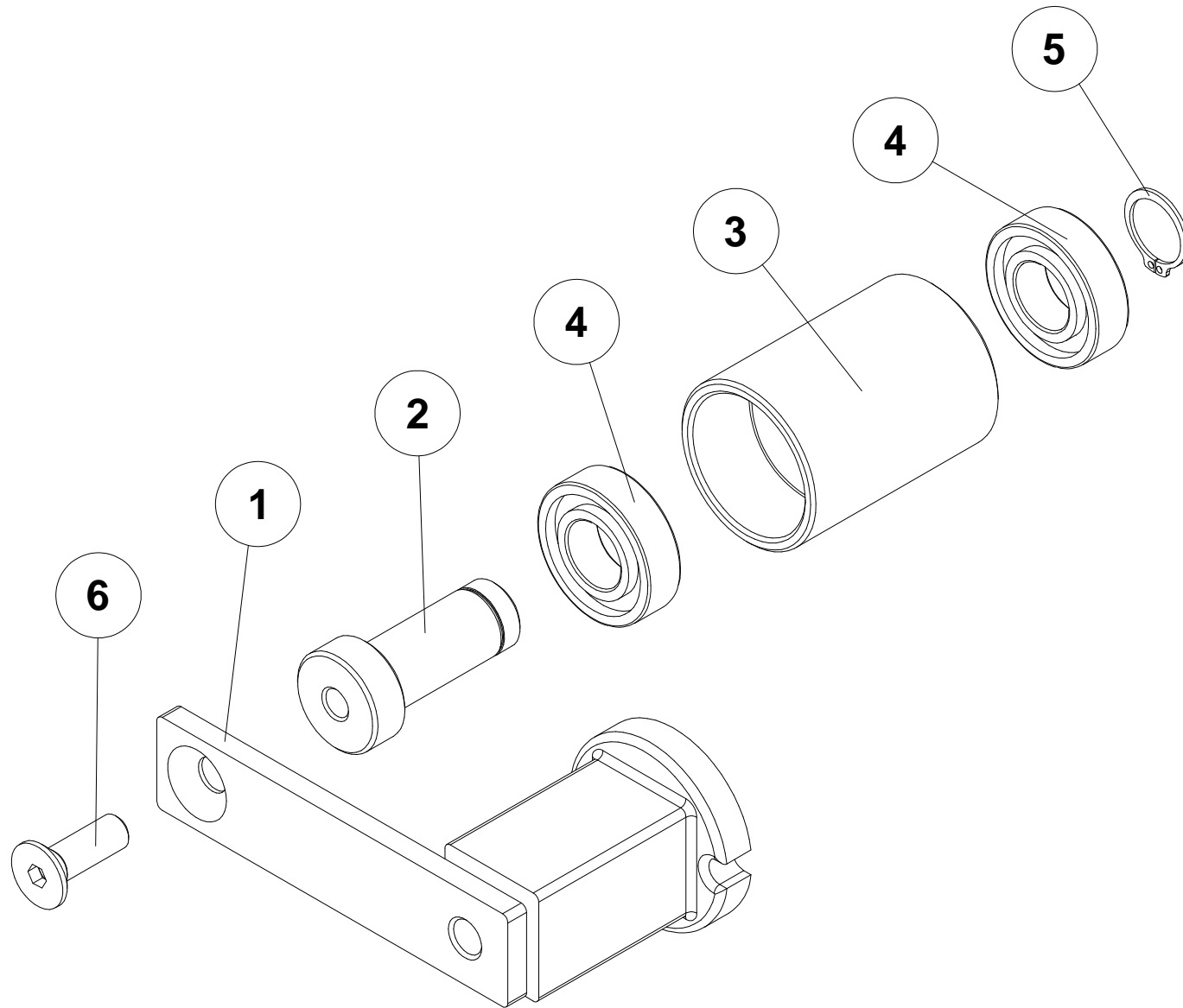


Bio 90 T

TAB. 6 – Idler



Pos.	Description	No.	Code
1	Idler SE 18	1	900757
2	Rod	1	001094
3	Roller	1	001095
4	Bearing 6004	2	900537
5	Seeger ring ø20	1	900350
6	Screw TSPEI M10x30	1	900473



Bio 90 T

TAB. 7 – Rotor Assembly (left)



Pos.	Description	No.	Code
1	Rotor disc	1	000036
2	Rod	2	000037
3	Washer ø16x3	4	900003
4	Blade TR3	6	000038
5	Spacer H=21	2	000039
6	Spacer H=12.5	2	000040
7	Spacer H=11.5	2	000041
8	Screw TSPEI M10x20	2	900042
9	Screw TSPEI M8x20	8	900043
10	Washer ø10x20	2	900028
11	Screw TE M10x16x1	2	900032
12	Chipper blade	2	000042
13	Rotor (left)	1	001096

